

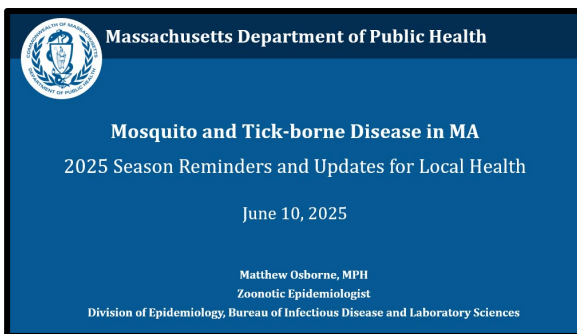


Massachusetts Department of Public Health

MDPH Tuesday Infectious Disease Webinar Series

Tools for Local Boards of Health

June 10, 2025



Hillary Johnson, MHS

Senior Epidemiology Advisor to Local Health, Division of Epidemiology

Petra Schubert, MPH

Emerging Infections Coordinator, Division of Epidemiology

Lionel White, MSIT

Senior Surveillance Research Analyst, MAVEN Training Team

- **2025 Immunization Updates Series**
- **Morbidity Update: Measles**
- **Iatrogenic Botulism Investigation Update**
- **Featured Presentation: Arbovirus Season 2025**
 - Matthew Osborne, MPH, Zoonotic Disease Epidemiologist III, Division of Epidemiology

I am absolutely delicious and I hate that mosquitoes know it.

Infectious Disease Tools for LBOH Webinar Schedule!

2025 Upcoming Schedule!

| | |
|----------------------------------|---|
| All Registrations: | http://tinyurl.com/MAVEN-Webinars |
| 2 nd Tues 6/10/25 | Arbovirus Season |
| 4 th Tues 6/24/25 | 4 th Tuesday Office Hours |
| 2 nd Tues 7/8/25 | Enteric Diseases (Foodborne) |
| 4 th Tues 7/22/25 | 4 th Tuesday Office Hours |
| | <i>August Webinar Break</i> |
| | <i>Happy Summer!</i> |
| 2 nd Tues 9/9/25 | Foodborne Illness (FBI) Complaints |
| 4 th Tues 9/23/25 | 4 th Tuesday Office Hours |
| 2 nd Tues 10/14/25 | 25-26 Respiratory Illness Season |
| 4 th Tues 10/28/25 | 4 th Tuesday Office Hours |

WEBINAR REGISTRATION PAGE:

<http://tinyurl.com/MAVEN-Webinars>

- You help us identify topics, needs, & content!
- Be sure to send ideas, requests, and questions to Hillary and Scott!

MAVEN Help has Guidance Documents and Previous Webinars:

<http://www.maven-help.maventrainingsite.com/toc.html>



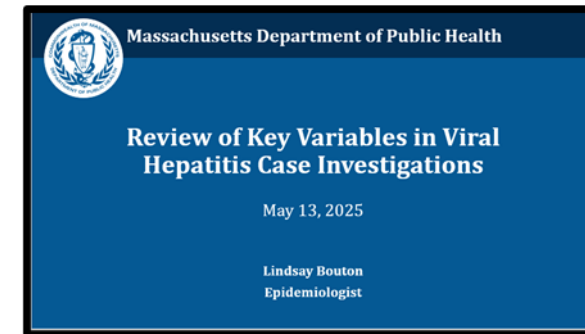
You can always contact
mavenhelp@mass.gov or
The MDPH Epi Program
at 617-983-6800 with
specific questions.

Next Office Hours
Tuesday, June 24, 2025 @11:00!

Updates – A quick recap for June 10, 2025

May 13, 2025:

- Happy National Nurses Week!
- 2025 Immunization Updates Webinar Series – Register Now!
- Morbidity Update: Measles
- MA Immunization Information System (MIIS) Tips for Looking at Your Vaccination Rates
- Morbidity Update: HPAI
- *Cyclospora* & *Vibrio* Season Update
 - Geena Chiumento & Johanna Vostok
- **Featured Presentation:** Review of Key Variables in Viral Hepatitis Case Investigations
 - Lindsay Bouton, MSc, Hepatitis A and B Surveillance Coordinator, Division of Epidemiology



Presentation: [PDF Slides](#), [Recording](#)



Always Remember you can see recent webinar recordings and slides in MAVEN Help.

Bookmark the URL!

MAVEN Help: <http://www.maven-help.maventrainingsite.com/toc.html>

2025 Immunization Updates Series Coming!

The Immunization Updates - a series of immunization-related webinars for health care providers:

- 5/7 - Immunization 101
- 5/21 - Immunization Schedule Updates (two 45-minute webinars)
 - Register for the Pediatric session or the Adult session or both
 - Pediatric update at 11:30 a.m., followed by Adult update at 12:20 p.m.
- 5/28 - Epidemiology of Vaccine Preventable Diseases in Massachusetts
- 6/4 - Vaccine Confidence
- 6/11 – Massachusetts Immunization Information System (MIIS)
- 6/18 - VFC Compliance/Vaccine Storage and Handling (for your VFC certificate!)
- Registration to open in April.

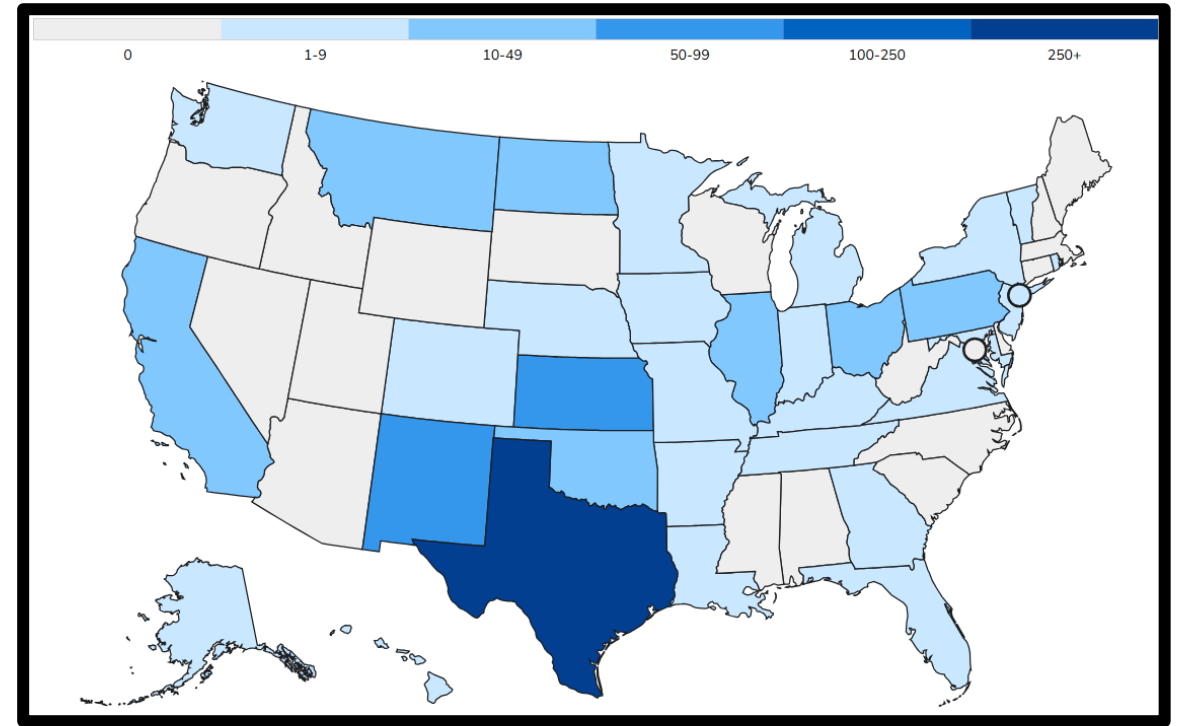
All webinars are virtual, and will run from noon to 1 p.m., except where noted. To obtain your VFC Certificate now, [watch this video](#) and pass the post-test.

[Registration](#) for Immunization Updates Series

Webinar materials and recordings will be posted [here](#) once available.

U.S. Measles Cases, 2025

- **No currently confirmed cases of measles in Massachusetts (6/9/25).**
- Nationally, as of June 5, 2025, a total of **1,168*** confirmed measles cases were reported by 34 jurisdictions.
 - ***CDC believes this is an undercount – many cases are not getting tested in some outbreak areas**
 - **285 cases were reported in 2024**
- There have been **14 outbreaks** (defined as 3+ related cases) reported in 2025, and 89% of confirmed cases (1,040 of 1,088) are outbreak-associated.
- **12% (137 of 1,168) Hospitalized**
- **3 confirmed deaths**
 - All three deaths were among unvaccinated individuals.

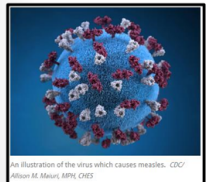


Data as of 6/5/2025. Source: <https://www.cdc.gov/measles/data-research/index.html>

95% of confirmed cases are unvaccinated

Measles Preparedness Reminders

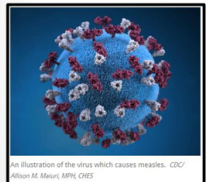
- **Review the Measles training on MAVEN Help**
- What is the LBOH's role?
 - Measles case investigation and control is a **partnership between MDPH and the LBOH**
 - Control measures start at minute 20 of the recording
 - Suspect Case Follow-Up:
 - We are receiving a lot of suspect cases due to the increase in cases nationwide.
 - In general, the State Epidemiologists organize specimen collection/pick-up and then contact locals with next steps.



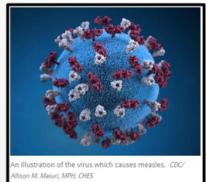
Introduction to Measles Case Investigation and Follow-Up for LBOHs

February 14, 2023

Hillary Johnson, MHS
Joyce Cohen, MPH



Division of Epidemiology and Immunization
Massachusetts Department of Public Health
305 South Street
Jamaica Plain, MA 02130-3597



1

[Intro to Measles Case Investigation and Follow-up](#) Slides
[Intro to Measles Case Investigations and Follow-up](#) Recording

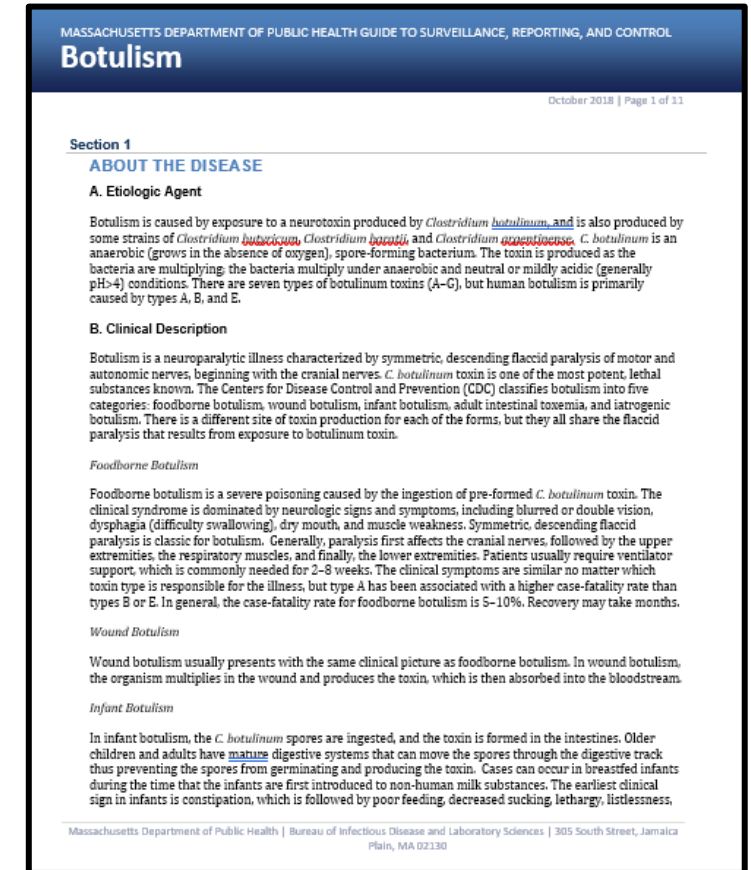
Iatrogenic Botulism Investigation Update

- **Botulism** is a neuromuscular illness characterized by symmetric, descending flaccid paralysis of motor and autonomic nerves, beginning with the cranial nerves. *C. botulinum* toxin is one of the most potent, lethal substances known.
- CDC classifies botulism into five categories:
 1. foodborne botulism,
 2. wound botulism,
 3. infant botulism,
 4. adult intestinal toxemia, and
 5. **iatrogenic botulism**
- There is a different site of toxin production for each of the forms, but they all share the flaccid paralysis that results from exposure to botulinum toxin.

Iatrogenic Botulism Investigation Update

Iatrogenic Botulism

- **Iatrogenic botulism** can occur if too much toxin is injected. Toxin can be injected for cosmetic reasons as well as medical reasons. Laboratory confirmed cases have occurred after injection of high doses of unapproved botulinum toxin product.
- [DPH Clinical Advisory June 5, 2025](#)
- [DPH Press Release June 7, 2025](#)



[Botulism Surveillance Guide Chapter](#)

Iatrogenic Botulism Investigation Update

- MDPH is investigating a cluster of iatrogenic botulism cases linked to cosmetic botulinum toxin (commonly referred to as “Botox”) injections administered at **Rodrigo Beauty**, located at **464 Granite Ave. in Milton, Massachusetts**.
- **Iatrogenic botulism** is caused by botulinum toxin spreading beyond the injection site.
- In a **press release** on [Saturday, June 7th](#), it was requested that anyone who received **Botox injections at Rodrigo Beauty May 1st – June 4th** to contact MDPH or their local board of health, even if they are not currently experiencing symptoms.
 - Please notify MDPH of any individuals reported to your LBOH by calling 617-983-6800.
Information needed:
 - name of Rodrigo Beauty patient,
 - contact information, and
 - any information available about the treatment they received.
 - MDPH will be re-contacting individuals to complete a standard questionnaire as part of our outbreak response.

QUESTIONS?

